

HARTLEY WOOD



**FINEST
ENGLISH
ANTIQU
GLASS**

A world leader in the art of glass



Hartley Wood hand-blown

glass enjoys a reputation

second to none. Often described as the best glass in the world, its high quality and unique appearance makes it the most sought-after glass for prestigious design features in buildings both new and old. Indeed each sheet of Hartley Wood glass is a work of art in itself.



'DAILY BREAD' – window by Mark Angus in Durham Cathedral, an exciting and dynamic use of Hartley Wood glass

The unique qualities of Hartley

Wood glass are created by using the centuries-old mouth-blown process together with modern melting techniques.

This, added to over one hundred years of in-house experience and expertise makes Hartley Wood very much a world leader.

Great emphasis is placed on

retaining the great skills of the glassmaker, as genuine antique glass can only be made by the centuries-old mouth-

blown process. First the craftsman blows a bubble in the glass, swinging, re-heating and blowing it longer, then cutting off the ends to convert it into a cylinder. By

flattening it a sheet of glass is produced.

Hartley Wood has seen a world-wide growth

in the uses of its

glass. Users range from the glass artists and the studio designer to the architect designing a wide range of decorative features.



cutting along its length and then

*H*artley Wood glass can be found in prestigious buildings all over the world including the House of Commons, St. Paul's Cathedral and the Hard Rock Café in Dallas! Locally it can be found in Durham Cathedral. Hartley Wood glass is very much the professionals choice.



Gustav Klimt's 'The Kiss' by Jenifer Jane Glass Studio



◀ Window by Susan Bradbury in Newcastle's College of Art and Design



Window by Goddard and Gibbs

*I*n addition to mouth-blown antique glass, Hartley Wood makes genuine hand-spun crown bullions. This is made in a wide range of colours, tints and streakies and contains the same quality of character and beauty that you expect from antique glass.

THE VASEWARE RANGE

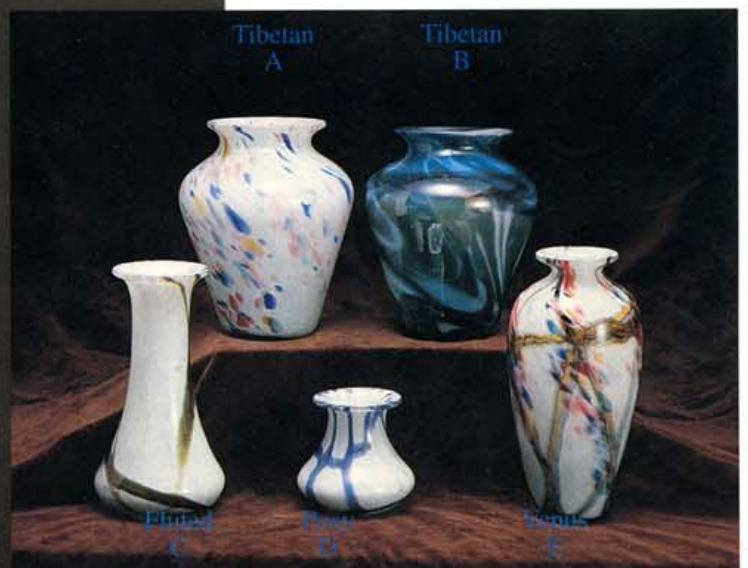


STANDARD COLOUR RANGE

- B = Blue
- B-A = Blue & amber
- B-O = Blue & opal
- B-P = Blue & purple
- G-A = Green & amber
- LGP = Liney gold pink
- LGP-A = Liney gold pink & amber
- LGP-B = Liney gold pink & blue
- LGP-B-O = Liney gold pink & blue & opal
- LGP-O = Liney gold pink & opal
- LGP-T = Liney gold pink & turquoise
- P-B-G-A = Purple & blue & green & amber
- T = Turquoise
- T-O = Turquoise & opal
- V = Violet
- V-O = Violet & opal
- V-T = Violet & turquoise
- V-T-A = Violet & turquoise & amber

SPECIALIZED COLOURS

- A = Speckled opalescent
- B = Ocean, turquoise & opal
- C = Marblescent, green & amber
- D = Marblescent, violet
- E = Marblescent, blue & amber with speckled colour

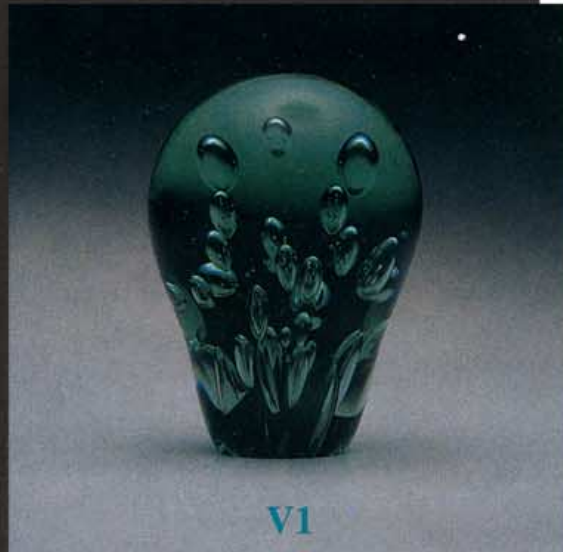


THE PAPERWEIGHT RANGE

VICTORIAN-STYLE



*M*ost of the Victorian-style patterns can be enclosed in any of the adjacent forms and sizes. Please contact Harley Wood for your individual requirements.



ANTIQUÉ-PATTERNED



A wide range of paperweights can be customized to your own requirements. Please contact Hartley Wood for further details.

HARTLEY WOOD ANTIQUE-STYLE PAPERWEIGHTS



Genuine Hartley Wood antique glass is used to reproduce Victorian Style paperweights as they were made over 150 years ago.

This unique tinted glass is patterned with delicate sand, bubble and water designs to encapsulate fascinating and individual works of art.



A gather of glass is taken on the pontil and rolled in sand



A second gather is taken and dipped on a ring of sand

The spherical shape is carefully formed in a wooden block



The third and final gather is taken, encapsulating the sand pattern and forming the air bubbles

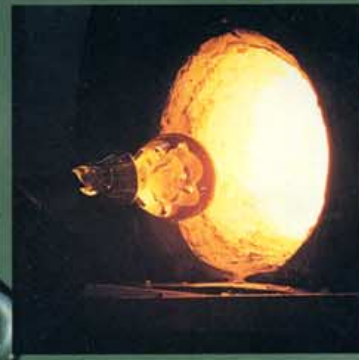


The back of the paperweight is cut in to enable separation from the pontil

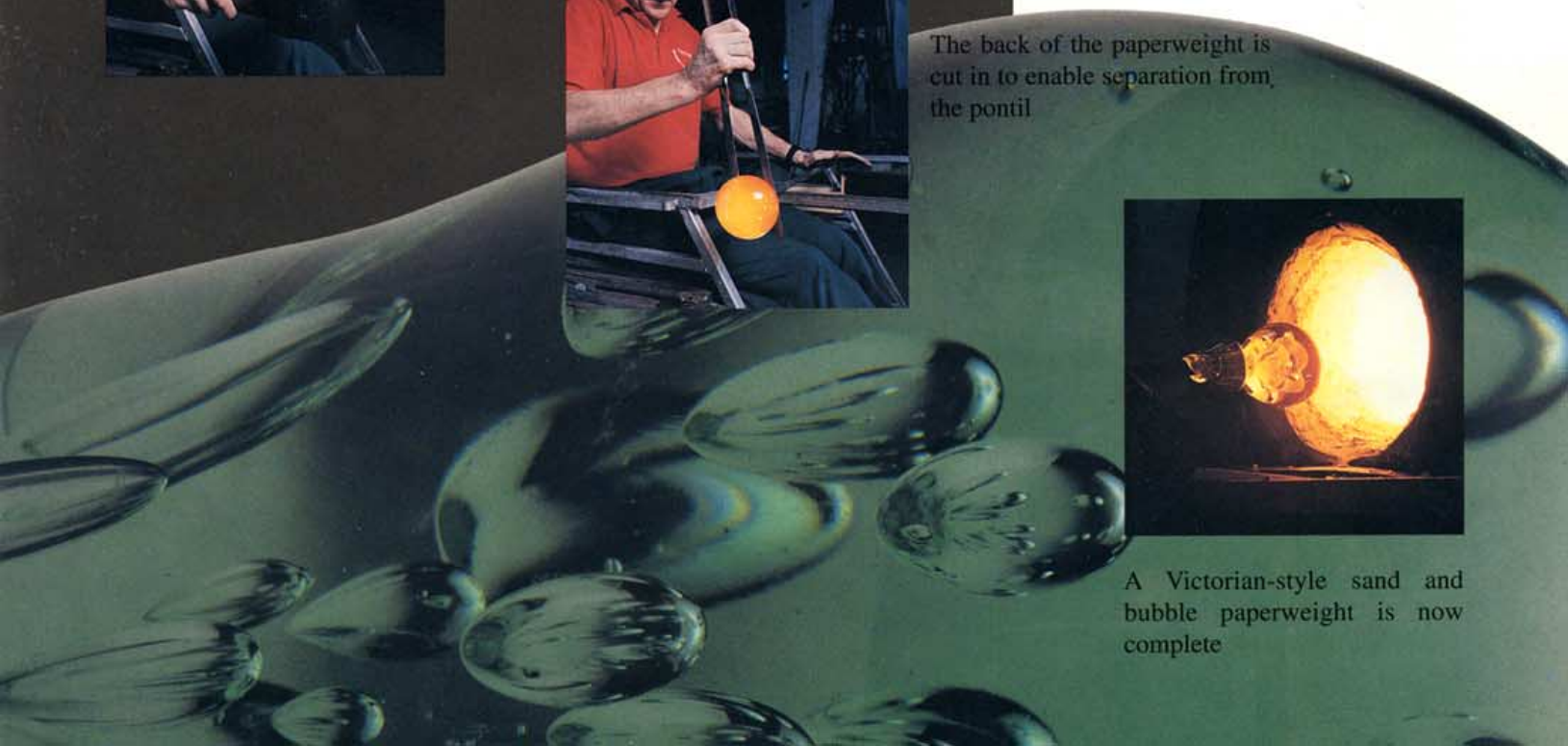


The glassmaker pushes holes into the soft glass to create air pockets

Hartley Wood also offers a wide range of colourful and intricate patterned paperweights. All are created from Hartley Wood antique glass.



A Victorian-style sand and bubble paperweight is now complete



HARTLEY WOOD ANTIQUE VASEWARE



1. The first gather of molten glass is taken on the blowpipe.

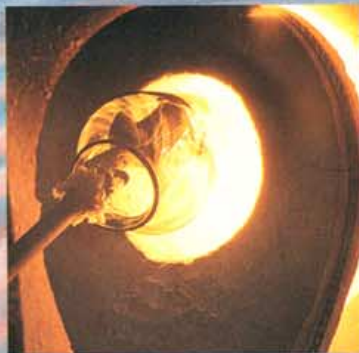


2. The gather is dipped in fragments of coloured glass which is melted and twisted, ready for a second gathering.

4. First the neck is precisely trimmed with 'glass scissors'.



5. Now the full skill of the glassblower is required to work the neck open with metal tongs.



6. The vase is cracked off the punty and warmed in the glory hole.

7. The Hartley Wood stamp of authenticity is applied to the base of the vase. The finished product is unmistakably Hartley Wood – English antique glass at its finest.



3. After carefully-controlled blowing in a wooden or metal mould, the vase can be cracked off onto a punty ready for the shaping of the neck.





Visit Hartley Wood's factory shop and visitors' centre and experience the magical art of glass blowing.

See the traditional methods of blowing flat glass or the original technique of spinning bullion glass.

Hartley Wood giftware can also be seen, and our factory shop displays everything from collectable paperweights and Victorian-style door butlers to antique vaseware with over twenty different colours to choose from. Each item is individually hand-crafted with all the character that you'd expect from antique glassware.

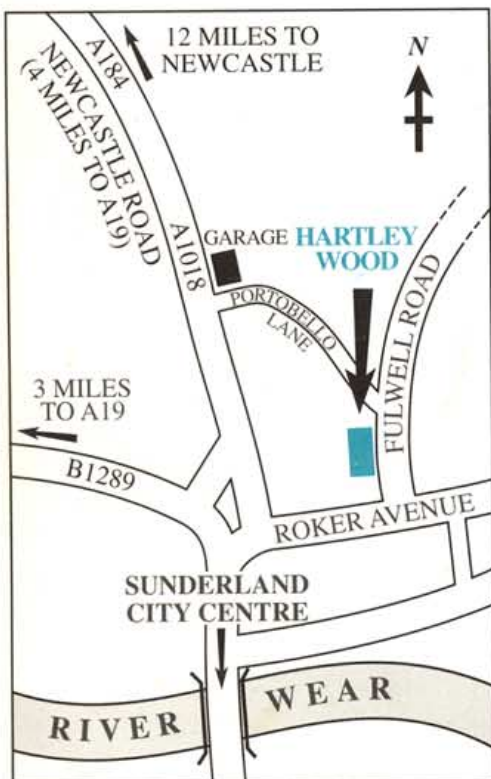
Opening Hours:

9 a.m. to 5 p.m. Monday to Friday

9 a.m. to 12 noon Saturday

Please telephone to confirm glassblowing times.

Guided tours are available by appointment.



The first glass in England was probably made in the North-East when according to the Venerable Bede's *'History of England'* Gauls, from what is now France, were brought in to glaze a monastery at Monkwearmouth, Sunderland, in 674 AD.

Hartley Wood started in 1892 as the Portobello Glass Works. James Hartley Jnr., along with Alfred Wood, an expert in coloured glass, formed the company which now bears their names.

Over the last century Hartley Wood has achieved its position as not simply the only stained glass manufacturer in the UK but as a world leader.

During its lifetime but more particularly in the last 40 years, Hartley Wood has kept up to date with modern melting techniques and processes. At the same time the company has retained the individual artistic skills of the trained glassmakers who are responsible for the many different combinations of glass available from their warehouse.

Antique glass takes its name from the stained glass windows that went mainly into the medieval churches from the 12th to the 16th centuries. The Reformation saw the decline of this architecture, with window makers having

to resort to using coloured enamels on white or pale tinted glasses; these enamels were dull and lifeless in comparison with coloured glass and the brilliance of the windows was lost.

It was not until the mid-19th century that hand-made coloured glass again came to be made, re-creating its uneven thickness, the striations, the bubbles – the very imperfections which, refracting and reflecting the light, gave the life and jewel-like appearance to the glass. Genuine Antique Glass can only be made by the centuries-old mouth-blown process.

Antique blown glass combines with modern chemistry the inherited knowledge and closely-guarded secrets of the colour mixer to produce the most sought-after and widely-used of the stained glasses.

Different blowing techniques and melts are used to produce a plain surface, or reamy surface – an irregular surface with a pronounced rippled effect, or seedy, where small air bubbles are trapped in the body of the glass..

The glass can be blown with a solid colour or streaked on a white or varied coloured background. It can also be flashed with a thin layer of coloured glass, usually on a clear glass base.